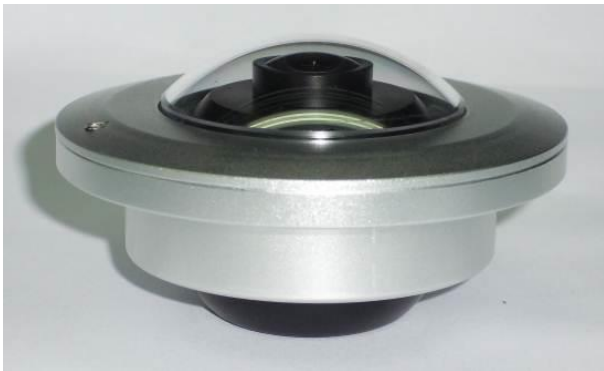
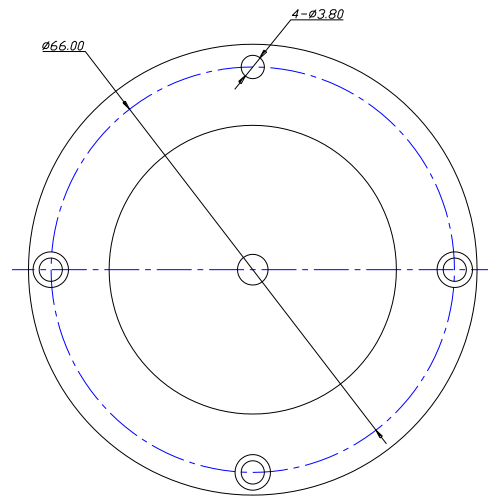
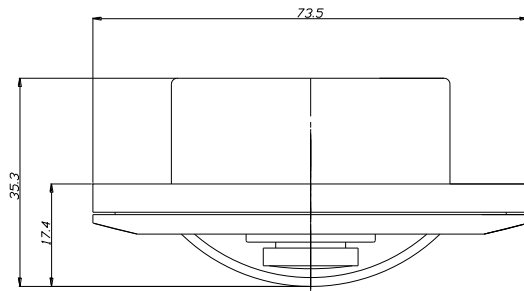


1/3" DSP Colour Super Thin Mini Dome Camera

Model: **DB52-700-22**
 High Resolution, 700 TVL, 12VDC
 Fish-eye Lens



Dimensions:



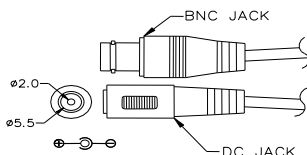
Features:

- Metal-cased IP66 weatherproof micro dome with fixed lens.
- Available in silver finish.
- Fish-eye lens.
- Low power consumption.
- 8-18VDC power input.
- Easy installation on ceiling or wall, surface or flush mount.
- Option Standard surface mount adaptor.

Operation procedures:

1. Use the attached hex key to loosen the hex head screw, then unscrew the top cover ~ if this is tight.
2. Attach the mounting base to wall or ceiling, as required. Use the supplied screws to fix camera in position.
3. Connect the camera as follows:
12VDC power input and Video output to 4 pin din jack.
4. Replace the transparent cover and the top cover.
5. Re-tighten the hex-head screw to lock the dome camera.

BNC Jack Connection:



Packing list:

Camera	1
Instruction manual	1
Hex-key	1
Mounting screw	4
Mounting plug	4

Specifications:

Model	DB52-700-22
Pick up Device	NextChip 2090 +1/3" Sony 810
TV System	NTSC
Picture Elements	976H x 494V
Horizontal Resolution	700 TVL
Sensitivity	0.1 Lux at F1.2
Scanning System	625TVL/2:1 Interlace
Synchronization	Internal
Infrared Spectrum	N/A
S/N Ratio	More Than 50 dB, (AGC Off)
Auto Gain Control	Auto
White Balance	Auto
Electronic Shutter	Auto
Back Light Compensation	Auto
Infrared LED	N/A
Infrared LED Range	N/A
Mirror	Option
Video Output	1 Vp-p, 75 Ω BNC Jack
Gamma Ratio	0.45
Lens	F2.2mm Fish-eye Lens
Viewing Angle (D)	170
Power Supply	8V-18VDC
Power Consumption	80mA
Dimensions (ø X H)	74.6 x 58.3 mm
Net Weight	130 g
Weatherproof	IP66
Operating Temperature	-10°C to +50°C

*Specifications are subject to change without prior notice.