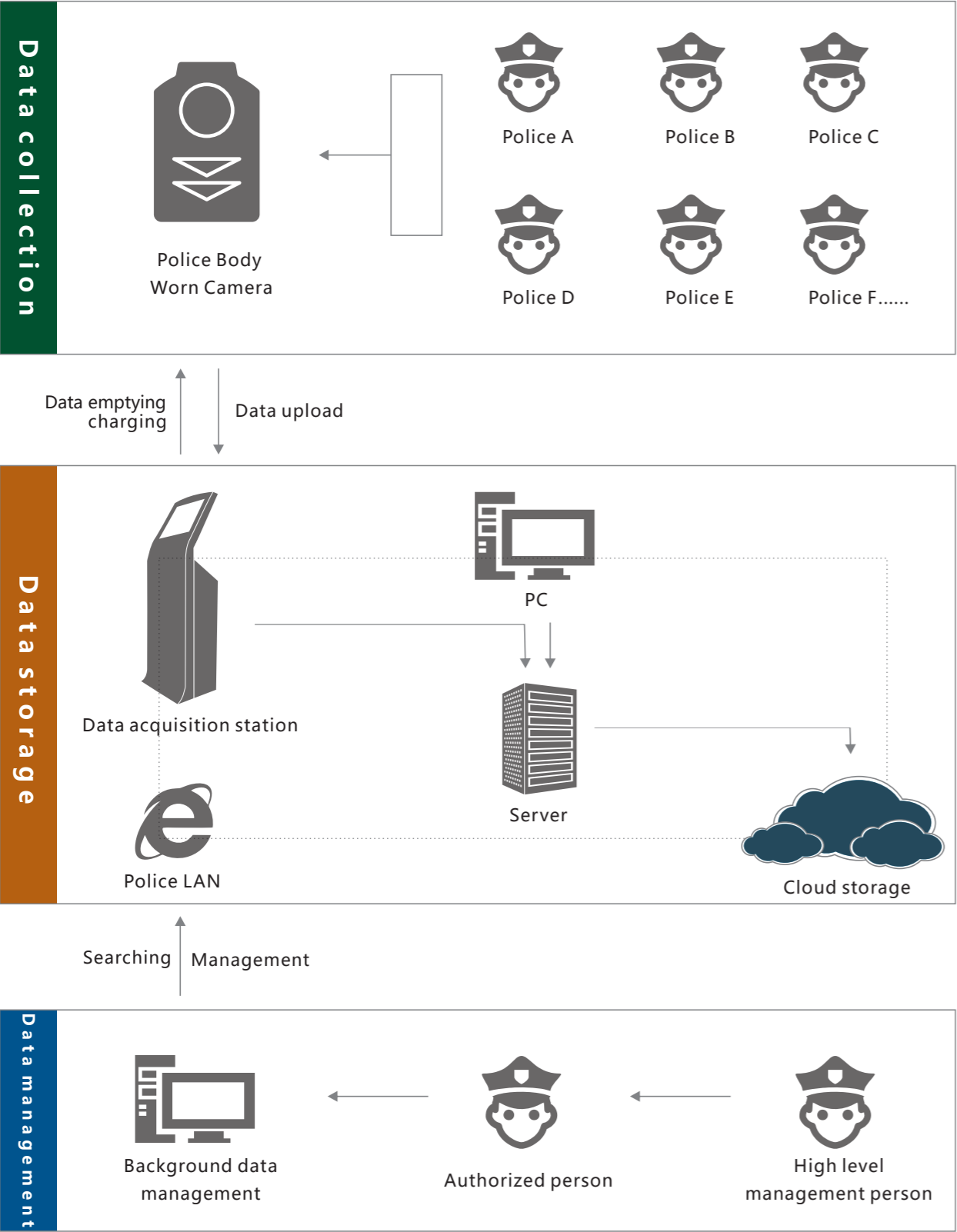
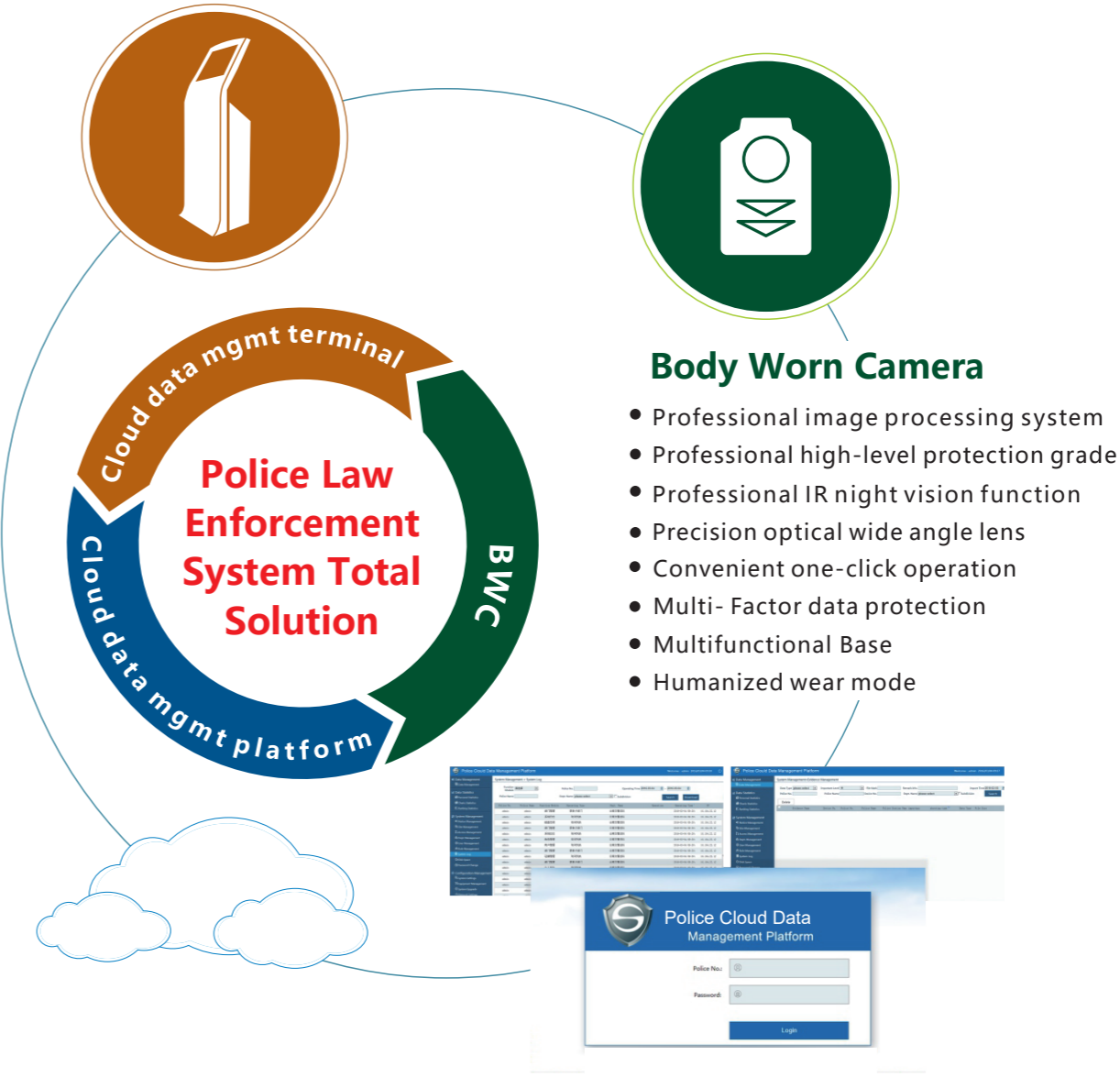


System topology

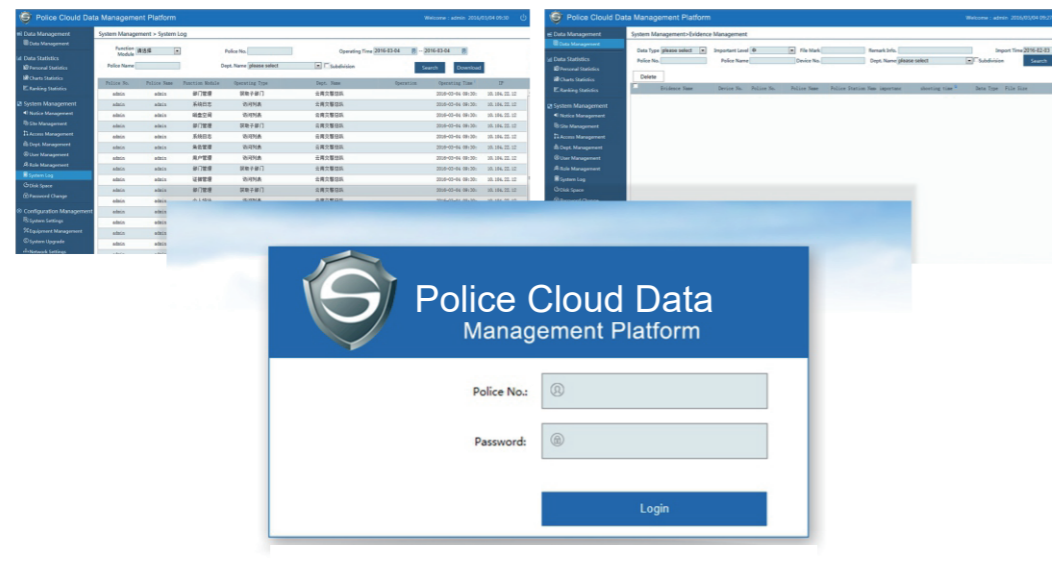


Data Acquisition Station

- Multiple devices simultaneously access
- Equipment management, and local data inquiry
- Remote data inquiry, playback and data download
- Can be mounted on any flat surface
- Auto data emptying
- Important photo issued
- Strong compatibility
- Software update
- Auto data importing
- Auto recognition



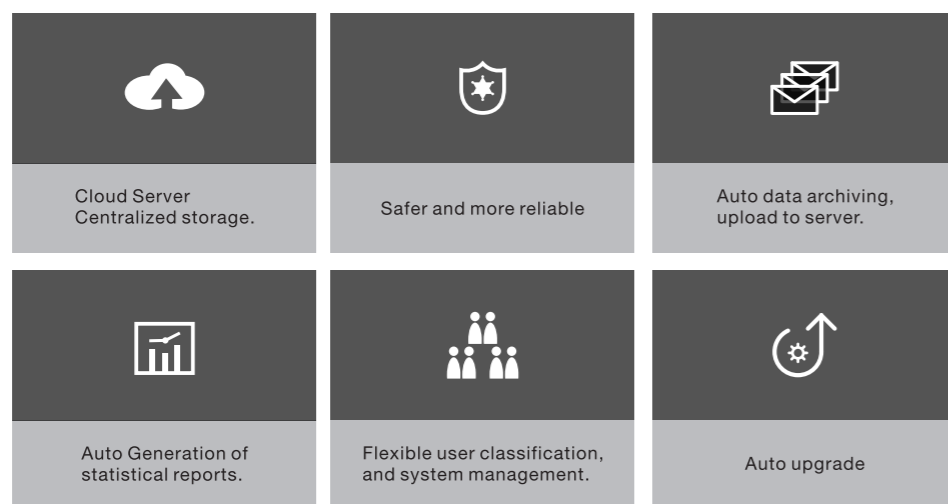
Police cloud data Management platform



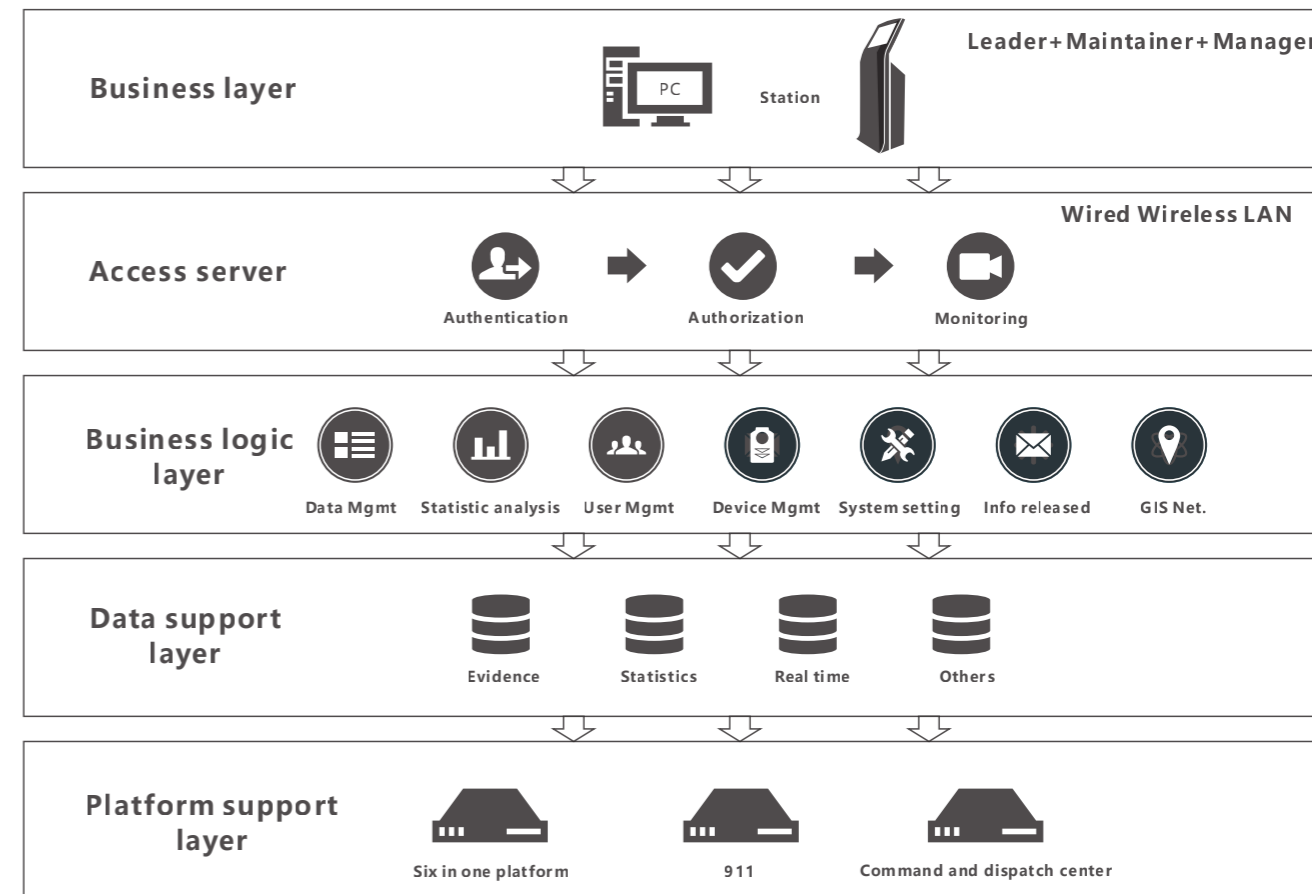
System Overview

Police Cloud Management System is aimed at managing single data station.

Police Cloud Data Management Platform is aimed at managing all subordinate data stations, safer and more reliable;



Platform Architecture



Data Management Module

Data management / data issued / data classification / data editing / correlative case

Statistical Analysis Module

Police officer statistics / department statistics / classified statistics / import time statistics / ranking statistics / trend analysis / srvice statistics / data Export

User Management Module

User management / department management / user authorization / role management / login password

Equipment Management Module

Body worn camera setting / body worn camera pairs / data acquisition station setting / data acquisition station control / data acquisition station monitoring

System Setting Module

Storage space / system log / system update

Information Released Module

On-site release / station send information / logging

GIS Internet Module

Geographic data display / space orientation / Line Tracing / 4G real-time deployment