

PDS04

8-Bay Portable Docking Station



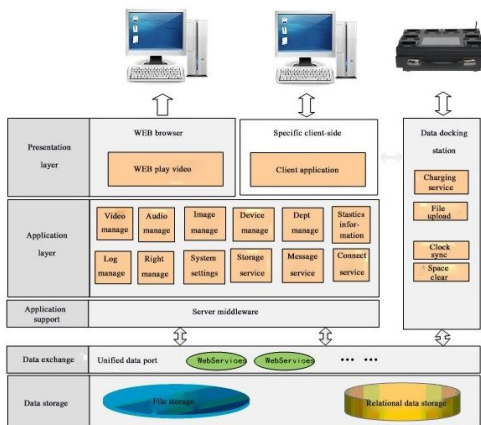
PDS04 is the professional 8-Bay Portable Docking Station bundled with Digital Evidence Management System software made for Body Worn Camera.

PDS04 works as the multi-charging docking station and is capable of simultaneous data management of 8 units of body worn cameras.

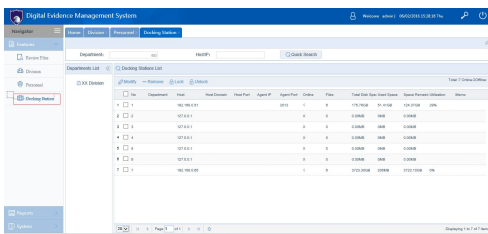
Key Features

- Simultaneous data automatic access and import of multiple devices
- Automatic recorder charging
- Automatic upload to cloud server
- Automatic recognition
- Automatic data emptying
- Important photo issued
- Time Synchronization
- Recorder management, local data inquiry and playback
- Remote data inquiry, playback and data download
- Software upgrade
- Strong compatibility (3rd party BWC support)

System Diagram



Data Evidence Management System



Technical Specifications

Hardware Configuration	Product series	PDS04 (8-Bay Docking Station)
	Dimension (L x W x H)	320mm x 250mm x 90mm
	Net Weight	3.76 KG
	BWC Interface	x 8 ports (Body Camera simultaneous connection)
	USB Port	USB3.0 HUB, transmission rate ≥ 400M/min
	Data Cable	Data Wire 5P USB 3.0 data line x8
	Power Line	1.8M standard power line
	Compatible O/S	WIN7 64bit or 32bit system compatible
	Application Software	DEMS (PC version, Web access)
	Software Encryption	Soft Dog HASP PRO (sublock)
	Interface (Port)	USB port
Power port		AC 100V---220V
Mini USB output voltage		5V
Mini USB output current		1A x8
Indicator light		Status indicator x8
Switch		x1
Function	Data Collection	Auto data collection, priority data collection
	Data Upload	On time auto data upload, important file prior upload
	Data Deletion	Auto deletion for surpass storage period data
	Data Emptying	Auto emptying camera data
	Data Search	Multiple condition data search
	Data Preview	Preview of video, audio, photo and log file
	Data Completeness	Data collection completeness
	Bookmark	Important file mark of collected data
	Running Status	Running status prompt
	Log function	Support log file function
	Software upgrade	Local or internet upgrade
	Camera Management	Management of body worn camera
	Time Calibration	Automatic time synchronization/calibration
Rights Management	Role management at different level	
ACS	Cable	Power cable x1, USB cable x1
	Power Adapter	x1

Functionality	
Time Synchronization	Time Synchronization
System Structure	B/S or C/S infrastructure
Online Map / Offline Map	The same set of electronic evidence management system supports online map and offline map, GPS data can be displayed on the offline map trajectory, high compatibility, powerful functions.
Index Automatic Upload	The generated index file is automatically uploaded to the server database
Multiple Storage Method	Storage can be distributed, centralized, mixed multiple storage.
Data Empty	BWC terminal access automatically emptied BWC storage space.
Large file upload	Large file upload function, the system supports more than 2G large file transmission, download, play and other functions
High-speed upload	At the same time insert 8 x fully recorded 16G BWC, in 50 minutes all data upload completed.
Data Collection	Automatically read the law enforcement terminal within the time and date, product number, police number, remaining memory, remaining battery information.
Unit Management	Administrators have the right to add to the unit information, modify, delete operation, ordinary users do not have this permission.
User Management	Administrators have the right to add to the unit information, modify, delete operation, ordinary users do not have this permission.
Device Management	Administrators have the right to add to the unit information, modify, delete operation, ordinary users do not have this permission.
Operation Journal	All operations have the operation log
Bookmark	Important data has bookmark function, user can mark on the important data of BWC for easy access
Data Lock	Important data has lock function, user can lock on the important data of BWC to avoid deletion
Device Match	BWC inserted slot is corresponding one by one to the software interface.
Input Operation	Data management device supports virtual keyboard, when the need to run automatically pop up a virtual keyboard, support drop-down list to select input method.
Storage Space	Intelligent find disk function (in addition to Disk C, D, the docking station automatically find the storage space function)
Insufficient Storage Space Handling	Data management equipment in the storage disk data is full, in accordance with the order automatically overflow.
Storage Space Display	Online management status bar should be able to immediately view the docking station free space.
Docking Station Online Management	The management server can immediately view the status of its own collection station, whether it is online, whether to upload data, and query the collection station's disk space)
File Security	The administrator has permission to delete the data file in the data management device, and the normal user does not have the permission.

Data Export	The administrator has the permission to export the data in the management device, and the normal user does not have the permission.
Interrupt Point Resume	With interrupted point resume function, to prevent data loss.
Expansion Platform	Reserved network interface: According to the demand for upgrading to cloud architecture system.
Upgrade Features	The system has an automatic upgrade function, the management server can upgrade their own collection of workstations at remote sites.
Self-service System Recovery	Standby system repair U disk, after the connection self-recovery system, and ensure that no data is lost. (provided by user's PC)
File Search	Accurate search (enter the BWC equipment number, police number, date, file type and other detailed information for retrieval).
	Sort search (refers to the selected function to sort search by the BWC shooting time search, the BWC upload time search, search by sirens, by BWC number search, press file index search, etc.).
	Fuzzy search (refers to the input keywords, keywords, key digits, etc.).
	Dedicated video player (the same screen, display video information, including the police officer number, BWC number, shooting time, upload time, marked content, small window display video playback content. Play content, you can full-screen video playback).
	Dedicated audio player (with the same screen, showing a variety of information on audio information, including the police officer number, BWC number, shooting time, upload time, mark the contents of the small window display audio playback. Play content, you can full-screen display of audio content).
	Dedicated picture viewer (the same screen, showing pictures of various information materials, including the police officer number, BWC number, shooting time, upload time, marked content, small window display picture playback. Picture play content, you can full screen display image play content).