

PDS03

8-Bay Docking Station with NFC



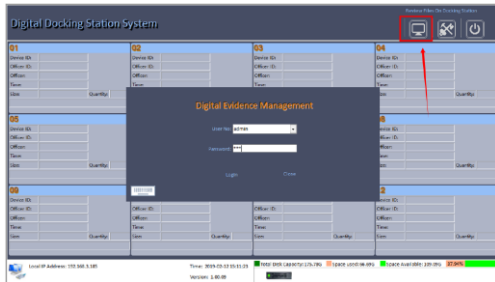
PDS03 is the latest portable 8-Bay Desktop Docking Station with RFID function and bundled with Digital Evidence Management System software for Body Worn Camera.

PDS03 works as the multi-charging docking station and is capable of simultaneous data management of up to 8 units of BV-A12s body worn cameras. The built-in RFID module supports user authentication function and allows assigning BWC to dedicated user with RFID card.

Key Features

- Simultaneous data automatic access and import of multiple devices
- Automatic recorder charging
- Automatic upload to cloud server
- Automatic recognition
- Automatic data emptying
- Important photo issued
- Time Synchronization
- Recorder management, local data inquiry and playback
- Remote data inquiry, playback and data download
- Software upgrade
- Strong compatibility (3rd party BWC support)

Data Evidence Management System



Technical Specifications

Hardware Configuration	Product series	PDS03 (8-Bay Docking Station)
	Dimension (L x W x H)	400mm x 200mm x 70mm
	Net Weight	3.05KG (with NFC); 2.8 KG (w/o NFC)
	USB Port	USB3.0 HUB, transmission rate ≥ 400M/min
	Docking Bay	Pogopin tray x8
	Power Line	standard power line
	Compatible O/S	WIN7 64bit or 32bit system compatible
	Application Software	DEMS (PC version)
	Software Encryption	Soft Dog HASP PRO (sublock), 4G USB disk embedded
Interface (Port)	USB port	One 12-port industrial HUBs, independent identification, single-port current 1.2A
	RFID module	1 x RFID reader
	AC Input Voltage	AC 100V--220V
	Mini USB output voltage	5V
	Mini USB output current	1A x8
	Power port	1x DC port, 12V/6A
	Power Supply	rated output 75W
	Switch	x1
Function	Data Collection	Auto data collection
	Data Upload	On time auto data upload, important file prior upload
	Data Deletion	Auto deletion for surpass storage period data
	Data Emptying	Auto emptying camera data
	Data Search	Multiple condition data search
	Data Preview	Preview of video, audio, photo and log file
	Data Completeness	Data collection completeness
	Bookmark	Important file mark of collected data
	Running Status	Running status prompt
	Log function	Support log file function
	Software upgrade	Local upgrade
	Camera Management	Management of body worn camera
Time Calibration	Automatic time synchronization/calibration	
Rights Management	Role management at different level	
ACS	Cable	Power cable x1, USB cable x1
	Power charger	x1

<i>Functionality</i>	
<i>Time Synchronization</i>	Time Synchronization
<i>System Structure</i>	B/S or C/S infrastructure
<i>Online Map / Offline Map</i>	The same set of electronic evidence management system supports online map and offline map, GPS data can be displayed on the offline map trajectory, high compatibility, powerful functions.
<i>Index Automatic Upload</i>	The generated index file is automatically uploaded to the server database
<i>Multiple Storage Method</i>	Storage can be distributed, centralized, mixed multiple storage.
<i>Data Empty</i>	BWC terminal access automatically emptied BWC storage space.
<i>Large file upload</i>	Large file upload function, the system supports more than 2G large file transmission, download, play and other functions
<i>High-speed upload</i>	At the same time insert 8 x fully recorded 16G BWC, in 50 minutes all data upload completed.
<i>Data Collection</i>	Automatically read the law enforcement terminal within the time and date, product number, police number, remaining memory, remaining battery information.
<i>Unit Management</i>	Administrators have the right to add to the unit information, modify, delete operation, ordinary users do not have this permission.
<i>User Management</i>	Administrators have the right to add to the unit information, modify, delete operation, ordinary users do not have this permission.
<i>Device Management</i>	Administrators have the right to add to the unit information, modify, delete operation, ordinary users do not have this permission.
<i>Operation Journal</i>	All operations have the operation log
<i>Bookmark</i>	Important data has bookmark function, user can mark on the important data of BWC for easy access
<i>Data Lock</i>	Important data has lock function, user can lock on the important data of BWC to avoid deletion
<i>Device Match</i>	BWC inserted slot is corresponding one by one to the software interface.
<i>Input Operation</i>	Data management device supports virtual keyboard, when the need to run automatically pop up a virtual keyboard, support drop-down list to select input method.
<i>Storage Space</i>	Intelligent find disk function (in addition to Disk C, D, the docking station automatically find the storage space function)
<i>Insufficient Storage Space Handling</i>	Data management equipment in the storage disk data is full, in accordance with the order automatically overflow.
<i>Storage Space Display</i>	Online management status bar should be able to immediately view the docking station free space.
<i>Docking Station Online Management</i>	The management server can immediately view the status of its own collection station, whether it is online, whether to upload data, and query the collection station's disk space)
<i>File Security</i>	The administrator has permission to delete the data file in the data management device, and the normal user does not have the permission.
<i>Data Export</i>	The administrator has the permission to export the data in the management device, and the normal user does not have the permission.

<i>Interrupt Point Resume</i>	With interrupted point resume function, to prevent data loss.
<i>Expansion Platform</i>	Reserved network interface: According to the demand for upgrading to cloud architecture system.
<i>Upgrade Features</i>	The system has an automatic upgrade function, the management server can upgrade their own collection of workstations at remote sites.
<i>Self-service System Recovery</i>	Standby system repair U disk, after the connection self-recovery system, and ensure that no data is lost. (provided by user's PC)
<i>File Search</i>	Accurate search (enter the BWC equipment number, police number, date, file type and other detailed information for retrieval).
	Sort search (refers to the selected function to sort search by the BWC shooting time search, the BWC upload time search, search by sirens, by BWC number search, press file index search, etc.).
	Fuzzy search (refers to the input keywords, keywords, key digits, etc.).
	Dedicated video player (the same screen, display video information, including the police officer number, BWC number, shooting time, upload time, marked content, small window display video playback content. Play content, you can full-screen video playback).
	Dedicated audio player (with the same screen, showing a variety of information on audio information, including the police officer number, BWC number, shooting time, upload time, mark the contents of the small window display audio playback. Play content, you can full-screen display of audio content).
	Dedicated picture viewer (the same screen, showing pictures of various information materials, including the police officer number, BWC number, shooting time, upload time, marked content, small window display picture playback. Picture play content, you can full screen display image play content).